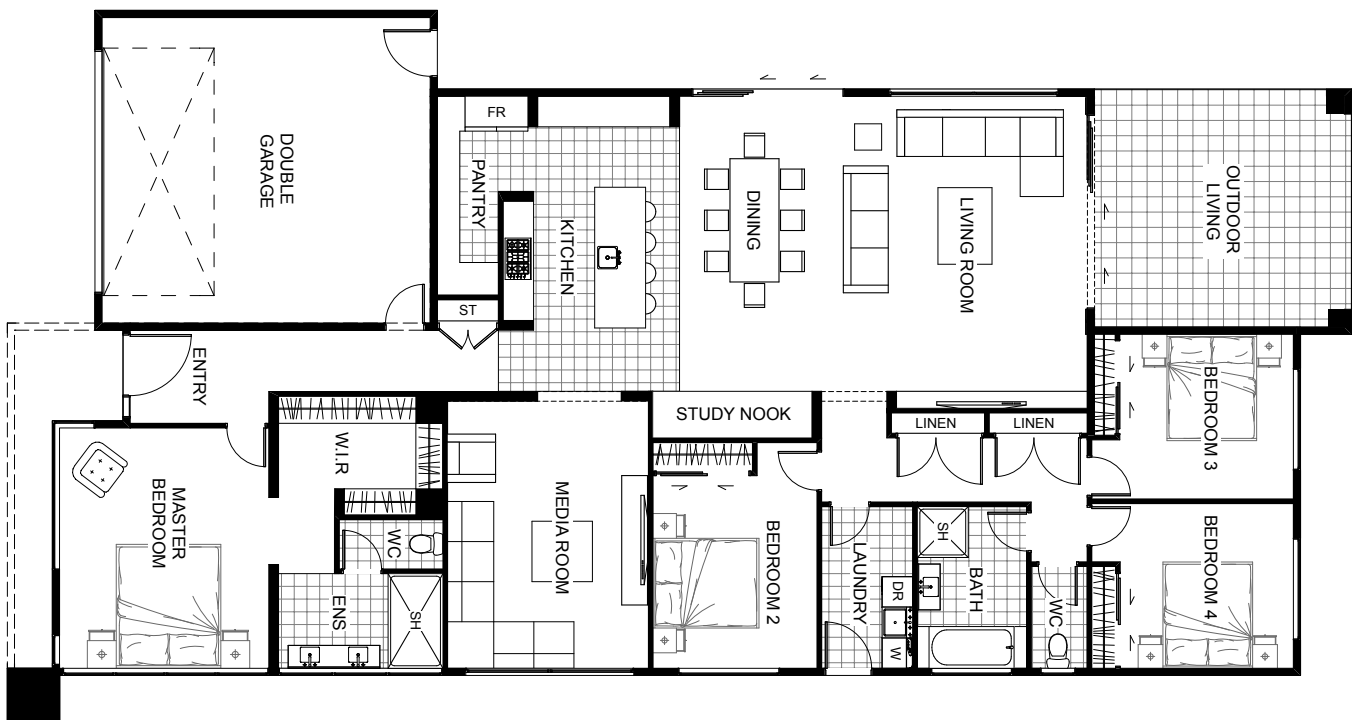









The Beaumont facade is sharp and eye-catching with its clean architectural lines. The generous master bedroom is positioned at the front of home and includes a large walk-in robe and ensuite with twin vanity. A generous walk-in pantry allows plenty of storage space and convenient refrigerator allocation to keep the kitchen clutter free. The integrated outdoor living area cleverly extends the main living space seamlessly via sliding doors. The Beaumont also includes three bedrooms, central bathroom and versatile home theatre which could also be used as a formal lounge or rumpus room.



Floor Area: 268m²

 2
  4
  2
  26.4m
  14.0m

Contact Mike Childs:

Ph: 06 765 8322 M: 027 444 9733

E: info@mikechilds.co.nz

www.mikechilds.co.nz

